

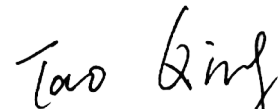


Verification Report

Applicant : Shenzhen Chainway Information Technology Co.,Ltd.
Product Name : Fixed Android UHF Reader
Model Name : URA8
Brand Name : CHAINWAY
Verification Request : With reference to RoHS Directive 2015/863/EU amending 2011/65/EU
Date Sample Received : 2019-12-29
Verification Date : 2019-12-29 to 2020-01-17
Issue Date : 2020-02-25
Conclusion : Based on the performed tests on submitted sample(s),the results of Lead, Mercury, Cadmium, Hexavalent chromium, Polybrominated biphenyls (PBBs),Polybrominated diphenyl ethers (PBDEs) and Phthalates such as Bis (2-ethylhexyl) phthalate (DEHP), Dibutyl phthalate (DBP), Butyl benzyl Phthalate (BBP), Diisobutyl phthalate (DIBP) comply with the limits as set by RoHS Directive (EU) 2015/863 amending Annex II to Directive 2011/65/EU.

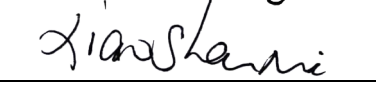
Edited by

:


Tao Qing (Rapporteur)

Approved by

:


Xiaoshan Ni (Supervisor)

NOTE: This document is issued by MORLAB, the Verification report shall not be reproduced except in full without prior written permission of the company. The test results apply only to the particular sample(s) tested and to the specific tests carried out which is available on request for validation and information confirmed at our website.





DIRECTORY

TEST REPORT DECLARATION 2

1. TECHNICAL INFORMATION 3

1.1. APPLICANT INFORMATION 3

2. TEST METHODS 4

3. TEST RESULTS AND SAMPLE DESCRIPTION 5

ANNEX A PHOTOGRAPHS OF THE EUT 37

ANNEX B PHOTOGRAPHS OF TEST PART 38

ANNEX C GENERAL INFORMATION 21

Change History		
Version	Date	Reason for change
1.0	2020-02-25	First edition



1. Technical Information

Note: Provided by applicant

1.1 Applicant Information

Applicant	Shenzhen Chainway Information Technology Co.,Ltd.
Applicant Address	9/F, Building 2, Daqian Industrial Park, Longchang Rd., District 67, Bao'an, Shenzhen
Manufacturer	Shenzhen Chainway Information Technology Co.,Ltd.
Manufacturer Address	9/F, Building 2, Daqian Industrial Park, Longchang Rd., District 67, Bao'an, Shenzhen

2. Test Methods

(1) There are the results on total Br while test items on restricted substances are PBBs and PBDEs. There are the results on total Cr while test items on restricted substances Cr(VI)

(2) Results are obtained by EDXRF for primary screening, and further chemical testing by ICP-OES (for Cd, Pb, Hg), UV-Vis (for Cr(VI)) and GC-MS (for PBBs, PBDEs) is recommended to be performed, if the concentration exceeds the below warning value according to IEC62321-3-1:2013 (unit: mg/kg)

Element	Polymer and Metal	Composite Materials	Composite Materials
Cd	$P \leq 70 - 3\sigma < D < 130 + 3\sigma \leq F$	$P \leq 70 - 3\sigma < D < 130 + 3\sigma \leq F$	$P \leq 50 - 3\sigma < D < 150 + 3\sigma \leq F$
Pb	$P \leq 700 - 3\sigma < D < 1300 + 3\sigma \leq F$	$P \leq 700 - 3\sigma < D < 1300 + 3\sigma \leq F$	$P \leq 500 - 3\sigma < D < 1500 + 3\sigma \leq F$
Hg	$P \leq 700 - 3\sigma < D < 1300 + 3\sigma \leq F$	$P \leq 700 - 3\sigma < D < 1300 + 3\sigma \leq F$	$P \leq 500 - 3\sigma < D < 1500 + 3\sigma \leq F$
Br	$P \leq 300 - 3\sigma < D$	----	$P \leq 250 - 3\sigma < D$
Cr	$P \leq 700 - 3\sigma < D$	$P \leq 700 - 3\sigma < D$	$P \leq 500 - 3\sigma < D$

(a) P = Below Limit, F = Over Limit, D=Inconclusive, LOD=Limit of Detection, ----=Not regulated.

(b) The XRF screening test for RoHS elements- the reading may be different to actual content in the sample be of non-uniformity composition

(3) Chemical Test

Unit and MDL in wet chemical test.

Test item	Procedure	Apparatus	MDL
Hg	IEC 62321-4:2013+AMD1:2017 CSV	ICP-OES	10
Cd & Pb	IEC 62321-5-2013	AAS or ICP-OES	10
Cr ⁶⁺	IEC 62321-7-2:2017(For Polymer and Electronics)	UV-VIS	10
	IEC 62321-7-1:2015 [▲] (For Plating on Metals)		0.10ug/cm ²
PBBs & PBDEs	IEC 62321-6:2015	GC-MS	100
Phthalates	IEC 62321-8:2017	GC-MS	100

(c) The MDL for single compound of PBBs and PBDEs is 100 mg/kg

(d) MDL of Cr(VI) for polymer and composite sample is 10 mg/kg

(e) MDL of Cr(VI) for metal sample is 0.10ug/cm²

(f) mg/kg=ppm, N.D. = Not Detected (< MDL), "----"= Not Conducted

(g)[▲]= a. The sample is negative for Cr⁶⁺ - the Cr⁶⁺ concentration is below the limit 0.10ug/cm². The coating is considered a non-Cr⁶⁺ based coating.

b. The sample positive for Cr⁶⁺ if the Cr⁶⁺ concentration is greater than 0.13ug/cm². The sample coating is considered to contain Cr⁶⁺.

c. The result between 0.10ug/cm² and 0.13ug/cm² is considered to be inconclusive unavoidable coating variations may influence the determination.

3. Test Results and Sample Description

The results of XRF screening and chemical test (Unit: mg/kg)

Part No.	Description	Material	X-ray Screening		Results of chemical test	Conclusion on RoHS EU	Sample Resubmitted
			Element	Data			
A-1	Silver Metal Case	Metal	Pb	D	N.D.	Comply	/
			Cd	P			
			Hg	P			
			Cr	P			
			Br	---			
			Cr ⁶⁺	---			
			PBBs	---			
			PBDEs	---			
			DBP	---			
			BBP	---			
			DEHP	---			
DIBP	---						
A-2	Silver Screw	Metal	Pb	P	Negative	Comply	/
			Cd	P			
			Hg	P			
			Cr	D			
			Br	---			
			Cr ⁶⁺	---			
			PBBs	---			
			PBDEs	---			
			DBP	---			
			BBP	---			
			DEHP	---			
DIBP	---						
A-3	Silver Screw	Metal	Pb	P	Negative	Comply	/
			Cd	P			
			Hg	P			
			Cr	D			
			Br	---			
			Cr ⁶⁺	---			
			PBBs	---			
			PBDEs	---			
			DBP	---			
			BBP	---			
			DEHP	---			
DIBP	---						
A-4	Silver Screw	Metal	Pb	P	Negative	Comply	/
			Cd	P			
			Hg	P			
			Cr	D			
			Br	---			
			Cr ⁶⁺	---			
			PBBs	---			
			PBDEs	---			
			DBP	---			
			BBP	---			
			DEHP	---			
DIBP	---						



Part No.	Description	Material	X-ray Screening		Results of chemical test	Conclusion on RoHS EU	Sample Resubmitted
			Element	Data			
A-5	Silver Screw	Metal	Pb	P	Negative	Comply	/
			Cd	P			
			Hg	P			
			Cr	D			
			Br	---			
			Cr ⁶⁺	---			
			PBBs	---			
			PBDEs	---			
			DBP	---			
			BBP	---			
			DEHP	---			
			DIBP	---			
A-6	Silvery Metal	Metal	Pb	D	N.D.	Comply	/
			Cd	P			
			Hg	P			
			Cr	P			
			Br	---			
			Cr ⁶⁺	---			
			PBBs	---			
			PBDEs	---			
			DBP	---			
			BBP	---			
			DEHP	---			
			DIBP	---			
A-7	Silver Metal Gasket	Metal	Pb	D	224	Comply	/
			Cd	P			
			Hg	P			
			Cr	P			
			Br	---			
			Cr ⁶⁺	---			
			PBBs	---			
			PBDEs	---			
			DBP	---			
			BBP	---			
			DEHP	---			
			DIBP	---			
A-8	Silver Metal Spring	Metal	Pb	P	Negative	Comply	/
			Cd	P			
			Hg	P			
			Cr	D			
			Br	---			
			Cr ⁶⁺	---			
			PBBs	---			
			PBDEs	---			
			DBP	---			
			BBP	---			
			DEHP	---			
			DIBP	---			



Part No.	Description	Material	X-ray Screening		Results of chemical test	Conclusion on RoHS EU	Sample Resubmitted
			Element	Data			
A-9	Black Plastic Chips	Polymer	Pb	P	---	Comply	/
			Cd	P	---		
			Hg	P	---		
			Cr	P	---		
			Br	D	---		
			Cr ⁶⁺	---	---		
			PBBs	---	N.D.		
			PBDEs	---	N.D.		
			DBP	---	N.D.		
			BBP	---	N.D.		
			DEHP	---	N.D.		
			DIBP	---	N.D.		
A-10	Gold Metal	Metal	Pb	D	#2.67×10 ⁴	Comply	/
			Cd	P	---		
			Hg	P	---		
			Cr	P	---		
			Br	---	---		
			Cr ⁶⁺	---	---		
			PBBs	---	---		
			PBDEs	---	---		
			DBP	---	---		
			BBP	---	---		
			DEHP	---	---		
			DIBP	---	---		
A-11	White Plastic	Polymer	Pb	P	---	Comply	/
			Cd	P	---		
			Hg	P	---		
			Cr	P	---		
			Br	P	---		
			Cr ⁶⁺	---	---		
			PBBs	---	---		
			PBDEs	---	---		
			DBP	---	N.D.		
			BBP	---	N.D.		
			DEHP	---	N.D.		
			DIBP	---	N.D.		
A-12	Gold Metal Nut	Metal	Pb	D	#2.55×10 ⁴	Comply	/
			Cd	P	---		
			Hg	P	---		
			Cr	P	---		
			Br	---	---		
			Cr ⁶⁺	---	---		
			PBBs	---	---		
			PBDEs	---	---		
			DBP	---	---		
			BBP	---	---		
			DEHP	---	---		
			DIBP	---	---		



Part No.	Description	Material	X-ray Screening		Results of chemical test	Conclusion on RoHS EU	Sample Resubmitted
			Element	Data			
A-13	Yellow Metal Gasket	Metal	Pb	P	---	Comply	/
			Cd	P	---		
			Hg	P	---		
			Cr	P	---		
			Br	---	---		
			Cr ⁶⁺	---	---		
			PBBs	---	---		
			PBDEs	---	---		
			DBP	---	---		
			BBP	---	---		
			DEHP	---	---		
			DIBP	---	---		
A-14	Gold Metal	Metal	Pb	D	#2.51×10 ⁴	Comply	/
			Cd	P	---		
			Hg	P	---		
			Cr	P	---		
			Br	---	---		
			Cr ⁶⁺	---	---		
			PBBs	---	---		
			PBDEs	---	---		
			DBP	---	---		
			BBP	---	---		
			DEHP	---	---		
			DIBP	---	---		
A-15	White Plastic	Polymer	Pb	P	---	Comply	/
			Cd	P	---		
			Hg	P	---		
			Cr	P	---		
			Br	P	---		
			Cr ⁶⁺	---	---		
			PBBs	---	---		
			PBDEs	---	---		
			DBP	---	N.D.		
			BBP	---	N.D.		
			DEHP	---	N.D.		
			DIBP	---	N.D.		
A-16	Yellow Metal Joint	Metal	Pb	P	---	Comply	/
			Cd	P	---		
			Hg	P	---		
			Cr	P	---		
			Br	---	---		
			Cr ⁶⁺	---	---		
			PBBs	---	---		
			PBDEs	---	---		
			DBP	---	---		
			BBP	---	---		
			DEHP	---	---		
			DIBP	---	---		



Part No.	Description	Material	X-ray Screening		Results of chemical test	Conclusion on RoHS EU	Sample Resubmitted
			Element	Data			
A-17	Black Covered Wire	Polymer	Pb	P	---	Comply	/
			Cd	P	---		
			Hg	P	---		
			Cr	P	---		
			Br	P	---		
			Cr ⁶⁺	---	---		
			PBBs	---	---		
			PBDEs	---	---		
			DBP	---	N.D.		
			BBP	---	N.D.		
			DEHP	---	N.D.		
DIBP	---	N.D.					
A-18	Transparent Covered Wire	Polymer	Pb	P	---	Comply	/
			Cd	P	---		
			Hg	P	---		
			Cr	P	---		
			Br	P	---		
			Cr ⁶⁺	---	---		
			PBBs	---	---		
			PBDEs	---	---		
			DBP	---	N.D.		
			BBP	---	N.D.		
			DEHP	---	N.D.		
DIBP	---	N.D.					
A-19	Silver Metal Wire	Metal	Pb	P	---	Comply	/
			Cd	P	---		
			Hg	P	---		
			Cr	P	---		
			Br	---	---		
			Cr ⁶⁺	---	---		
			PBBs	---	---		
			PBDEs	---	---		
			DBP	---	---		
			BBP	---	---		
			DEHP	---	---		
DIBP	---	---					
A-20	Black Shrinkable Tube	Polymer	Pb	P	---	Comply	/
			Cd	P	---		
			Hg	P	---		
			Cr	P	---		
			Br	P	---		
			Cr ⁶⁺	---	---		
			PBBs	---	---		
			PBDEs	---	---		
			DBP	---	N.D.		
			BBP	---	N.D.		
			DEHP	---	N.D.		
DIBP	---	N.D.					



Part No.	Description	Material	X-ray Screening		Results of chemical test	Conclusion on RoHS EU	Sample Resubmitted
			Element	Data			
A-21	White Plastic	Polymer	Pb	P	---	Comply	/
			Cd	P	---		
			Hg	P	---		
			Cr	P	---		
			Br	P	---		
			Cr ⁶⁺	---	---		
			PBBs	---	---		
			PBDEs	---	---		
			DBP	---	N.D.		
			BBP	---	N.D.		
			DEHP	---	N.D.		
			DIBP	---	N.D.		
A-22	Silvery Metal	Metal	Pb	P	---	Comply	/
			Cd	P	---		
			Hg	P	---		
			Cr	P	---		
			Br	---	---		
			Cr ⁶⁺	---	---		
			PBBs	---	---		
			PBDEs	---	---		
			DBP	---	---		
			BBP	---	---		
			DEHP	---	---		
			DIBP	---	---		
A-23	Black Covered Wire	Polymer	Pb	P	---	Comply	/
			Cd	P	---		
			Hg	P	---		
			Cr	P	---		
			Br	P	---		
			Cr ⁶⁺	---	---		
			PBBs	---	---		
			PBDEs	---	---		
			DBP	---	N.D.		
			BBP	---	N.D.		
			DEHP	---	N.D.		
			DIBP	---	N.D.		
A-24	Silver Metal Wire	Metal	Pb	P	---	Comply	/
			Cd	P	---		
			Hg	P	---		
			Cr	P	---		
			Br	---	---		
			Cr ⁶⁺	---	---		
			PBBs	---	---		
			PBDEs	---	---		
			DBP	---	---		
			BBP	---	---		
			DEHP	---	---		
			DIBP	---	---		



Part No.	Description	Material	X-ray Screening		Results of chemical test	Conclusion on RoHS EU	Sample Resubmitted
			Element	Data			
A-25	Black Plastic	Polymer	Pb	P	---	Comply	/
			Cd	P	---		
			Hg	P	---		
			Cr	P	---		
			Br	P	---		
			Cr ⁶⁺	---	---		
			PBBs	---	---		
			PBDEs	---	---		
			DBP	---	N.D.		
			BBP	---	N.D.		
			DEHP	---	N.D.		
			DIBP	---	N.D.		
A-26	Green Plastic	Polymer	Pb	P	---	Comply	/
			Cd	P	---		
			Hg	P	---		
			Cr	P	---		
			Br	P	---		
			Cr ⁶⁺	---	---		
			PBBs	---	---		
			PBDEs	---	---		
			DBP	---	N.D.		
			BBP	---	N.D.		
			DEHP	---	N.D.		
			DIBP	---	N.D.		
A-27	Silver Metal Pin	Metal	Pb	P	---	Comply	/
			Cd	P	---		
			Hg	P	---		
			Cr	P	---		
			Br	---	---		
			Cr ⁶⁺	---	---		
			PBBs	---	---		
			PBDEs	---	---		
			DBP	---	---		
			BBP	---	---		
			DEHP	---	---		
			DIBP	---	---		
A-28	Green Plastic	Polymer	Pb	P	---	Comply	/
			Cd	P	---		
			Hg	P	---		
			Cr	P	---		
			Br	P	---		
			Cr ⁶⁺	---	---		
			PBBs	---	---		
			PBDEs	---	---		
			DBP	---	N.D.		
			BBP	---	N.D.		
			DEHP	---	N.D.		
			DIBP	---	N.D.		



Part No.	Description	Material	X-ray Screening		Results of chemical test	Conclusion on RoHS EU	Sample Resubmitted
			Element	Data			
A-29	Silver Metal Connector	Metal	Pb	P	---	Comply	/
			Cd	P	---		
			Hg	P	---		
			Cr	P	---		
			Br	---	---		
			Cr ⁶⁺	---	---		
			PBBs	---	---		
			PBDEs	---	---		
			DBP	---	---		
			BBP	---	---		
			DEHP	---	---		
			DIBP	---	---		
A-30	Gold Metal	Metal	Pb	P	---	Comply	/
			Cd	P	---		
			Hg	P	---		
			Cr	P	---		
			Br	---	---		
			Cr ⁶⁺	---	---		
			PBBs	---	---		
			PBDEs	---	---		
			DBP	---	---		
			BBP	---	---		
			DEHP	---	---		
			DIBP	---	---		
A-31	Black Plastic	Polymer	Pb	P	---	Comply	/
			Cd	P	---		
			Hg	P	---		
			Cr	P	---		
			Br	P	---		
			Cr ⁶⁺	---	---		
			PBBs	---	---		
			PBDEs	---	---		
			DBP	---	N.D.		
			BBP	---	N.D.		
			DEHP	---	N.D.		
			DIBP	---	N.D.		
A-32	Yellow Metal Pin	Metal	Pb	D	N.D.	Comply	/
			Cd	P	---		
			Hg	P	---		
			Cr	P	---		
			Br	---	---		
			Cr ⁶⁺	---	---		
			PBBs	---	---		
			PBDEs	---	---		
			DBP	---	---		
			BBP	---	---		
			DEHP	---	---		
			DIBP	---	---		



Part No.	Description	Material	X-ray Screening		Results of chemical test	Conclusion on RoHS EU	Sample Resubmitted
			Element	Data			
A-33	Silver Screw	Metal	Pb	P	---	Comply	/
			Cd	P			
			Hg	P			
			Cr	P			
			Br	---			
			Cr ⁶⁺	---			
			PBBs	---			
			PBDEs	---			
			DBP	---			
			BBP	---			
			DEHP	---			
			DIBP	---			
A-34	Silvery Metal	Metal	Pb	D	#3.00×10 ⁴	Comply	/
			Cd	P			
			Hg	P			
			Cr	P			
			Br	---			
			Cr ⁶⁺	---			
			PBBs	---			
			PBDEs	---			
			DBP	---			
			BBP	---			
			DEHP	---			
			DIBP	---			
A-35	Silver Metal Gasket	Metal	Pb	P	---	Comply	/
			Cd	P			
			Hg	P			
			Cr	P			
			Br	---			
			Cr ⁶⁺	---			
			PBBs	---			
			PBDEs	---			
			DBP	---			
			BBP	---			
			DEHP	---			
			DIBP	---			
A-36	Black Plastic	Polymer	Pb	P	---	Comply	/
			Cd	P			
			Hg	P			
			Cr	P			
			Br	D			
			Cr ⁶⁺	---			
			PBBs	---			
			PBDEs	---			
			DBP	---			
			BBP	---			
			DEHP	---			
			DIBP	---			



Part No.	Description	Material	X-ray Screening		Results of chemical test	Conclusion on RoHS EU	Sample Resubmitted
			Element	Data			
A-37	Yellow Plastic	Polymer	Pb	P	---	Comply	/
			Cd	P	---		
			Hg	P	---		
			Cr	P	---		
			Br	D	---		
			Cr ⁶⁺	---	---		
			PBBs	---	N.D.		
			PBDEs	---	N.D.		
			DBP	---	N.D.		
			BBP	---	N.D.		
			DEHP	---	N.D.		
			DIBP	---	N.D.		
A-38	Silver Metal Plug	Metal	Pb	P	---	Comply	/
			Cd	P	---		
			Hg	P	---		
			Cr	P	---		
			Br	---	---		
			Cr ⁶⁺	---	---		
			PBBs	---	---		
			PBDEs	---	---		
			DBP	---	---		
			BBP	---	---		
			DEHP	---	---		
			DIBP	---	---		
A-39	White Plastic	Polymer	Pb	P	---	Comply	/
			Cd	P	---		
			Hg	P	---		
			Cr	P	---		
			Br	P	---		
			Cr ⁶⁺	---	---		
			PBBs	---	---		
			PBDEs	---	---		
			DBP	---	N.D.		
			BBP	---	N.D.		
			DEHP	---	N.D.		
			DIBP	---	N.D.		
A-40	Black Plastic	Polymer	Pb	P	---	Comply	/
			Cd	P	---		
			Hg	P	---		
			Cr	P	---		
			Br	P	---		
			Cr ⁶⁺	---	---		
			PBBs	---	---		
			PBDEs	---	---		
			DBP	---	N.D.		
			BBP	---	N.D.		
			DEHP	---	N.D.		
			DIBP	---	N.D.		



Part No.	Description	Material	X-ray Screening		Results of chemical test	Conclusion on RoHS EU	Sample Resubmitted
			Element	Data			
A-41	Grey Plastic	Polymer	Pb	P	---	Comply	/
			Cd	P	---		
			Hg	P	---		
			Cr	D	---		
			Br	P	---		
			Cr ⁶⁺	---	N.D.		
			PBBs	---	---		
			PBDEs	---	---		
			DBP	---	N.D.		
			BBP	---	N.D.		
			DEHP	---	N.D.		
			DIBP	---	N.D.		
A-42	Metal Spring	Metal	Pb	P	---	Comply	/
			Cd	P	---		
			Hg	P	---		
			Cr	D	---		
			Br	---	---		
			Cr ⁶⁺	---	Negative		
			PBBs	---	---		
			PBDEs	---	---		
			DBP	---	---		
			BBP	---	---		
			DEHP	---	---		
			DIBP	---	---		
A-43	Gold Metal	Metal	Pb	P	---	Comply	/
			Cd	P	---		
			Hg	P	---		
			Cr	P	---		
			Br	---	---		
			Cr ⁶⁺	---	---		
			PBBs	---	---		
			PBDEs	---	---		
			DBP	---	---		
			BBP	---	---		
			DEHP	---	---		
			DIBP	---	---		
A-44	Silvery Metal	Metal	Pb	P	---	Comply	/
			Cd	P	---		
			Hg	P	---		
			Cr	P	---		
			Br	---	---		
			Cr ⁶⁺	---	---		
			PBBs	---	---		
			PBDEs	---	---		
			DBP	---	---		
			BBP	---	---		
			DEHP	---	---		
			DIBP	---	---		



Part No.	Description	Material	X-ray Screening		Results of chemical test	Conclusion on RoHS EU	Sample Resubmitted
			Element	Data			
A-45	White Plastic	Polymer	Pb	P	---	Comply	/
			Cd	P	---		
			Hg	P	---		
			Cr	P	---		
			Br	D	---		
			Cr ⁶⁺	---	---		
			PBBs	---	N.D.		
			PBDEs	---	N.D.		
			DBP	---	N.D.		
			BBP	---	N.D.		
			DEHP	---	N.D.		
			DIBP	---	N.D.		
A-46	Silver Metal Plug	Metal	Pb	P	---	Comply	/
			Cd	P	---		
			Hg	P	---		
			Cr	P	---		
			Br	---	---		
			Cr ⁶⁺	---	---		
			PBBs	---	---		
			PBDEs	---	---		
			DBP	---	---		
			BBP	---	---		
			DEHP	---	---		
			DIBP	---	---		
A-47	Silvery Metal	Metal	Pb	P	---	Comply	/
			Cd	P	---		
			Hg	P	---		
			Cr	P	---		
			Br	---	---		
			Cr ⁶⁺	---	---		
			PBBs	---	---		
			PBDEs	---	---		
			DBP	---	---		
			BBP	---	---		
			DEHP	---	---		
			DIBP	---	---		
A-48	Black Plastic	Polymer	Pb	P	---	Comply	/
			Cd	P	---		
			Hg	P	---		
			Cr	P	---		
			Br	D	---		
			Cr ⁶⁺	---	---		
			PBBs	---	N.D.		
			PBDEs	---	N.D.		
			DBP	---	N.D.		
			BBP	---	N.D.		
			DEHP	---	N.D.		
			DIBP	---	N.D.		



Part No.	Description	Material	X-ray Screening		Results of chemical test	Conclusion on RoHS EU	Sample Resubmitted
			Element	Data			
A-49	Silver Metal Pins	Metal	Pb	P	---	Comply	/
			Cd	P	---		
			Hg	P	---		
			Cr	P	---		
			Br	---	---		
			Cr ⁶⁺	---	---		
			PBBs	---	---		
			PBDEs	---	---		
			DBP	---	---		
			BBP	---	---		
			DEHP	---	---		
A-50	Body Plastic	Polymer	Pb	P	---	Comply	/
			Cd	P	---		
			Hg	P	---		
			Cr	P	---		
			Br	P	---		
			Cr ⁶⁺	---	---		
			PBBs	---	---		
			PBDEs	---	---		
			DBP	---	N.D.		
			BBP	---	N.D.		
			DEHP	---	N.D.		
A-51	Silver Metal Connector	Metal	Pb	P	---	Comply	/
			Cd	P	---		
			Hg	P	---		
			Cr	P	---		
			Br	---	---		
			Cr ⁶⁺	---	---		
			PBBs	---	---		
			PBDEs	---	---		
			DBP	---	---		
			BBP	---	---		
			DEHP	---	---		
A-52	Black Plastic	Polymer	Pb	P	---	Comply	/
			Cd	P	---		
			Hg	P	---		
			Cr	P	---		
			Br	D	---		
			Cr ⁶⁺	---	---		
			PBBs	---	N.D.		
			PBDEs	---	N.D.		
			DBP	---	N.D.		
			BBP	---	N.D.		
			DEHP	---	N.D.		
DIBP	---	N.D.					



Part No.	Description	Material	X-ray Screening		Results of chemical test	Conclusion on RoHS EU	Sample Resubmitted
			Element	Data			
A-53	Silver Metal Plug	Metal	Pb	D	#1.46×10 ⁴	Comply	/
			Cd	P			
			Hg	P			
			Cr	P			
			Br	---			
			Cr ⁶⁺	---			
			PBBs	---			
			PBDEs	---			
			DBP	---			
			BBP	---			
			DEHP	---			
			DIBP	---			
A-54	Black Plastic	Polymer	Pb	P	---	Comply	/
			Cd	P			
			Hg	P			
			Cr	P			
			Br	P			
			Cr ⁶⁺	---			
			PBBs	---			
			PBDEs	---			
			DBP	N.D.			
			BBP	N.D.			
			DEHP	N.D.			
			DIBP	N.D.			
A-55	Black Stick Adhesive	Composite	Pb	P	---	Comply	/
			Cd	P			
			Hg	P			
			Cr	P			
			Br	P			
			Cr ⁶⁺	---			
			PBBs	---			
			PBDEs	---			
			DBP	N.D.			
			BBP	N.D.			
			DEHP	N.D.			
			DIBP	N.D.			
A-56	Black Ceramic	Composite	Pb	P	---	Comply	/
			Cd	P			
			Hg	P			
			Cr	P			
			Br	P			
			Cr ⁶⁺	---			
			PBBs	---			
			PBDEs	---			
			DBP	N.D.			
			BBP	N.D.			
			DEHP	N.D.			
			DIBP	N.D.			



Part No.	Description	Material	X-ray Screening		Results of chemical test	Conclusion on RoHS EU	Sample Resubmitted
			Element	Data			
A-57	Silvery Metal	Metal	Pb	P	---	Comply	/
			Cd	P	---		
			Hg	P	---		
			Cr	P	---		
			Br	---	---		
			Cr ⁶⁺	---	---		
			PBBs	---	---		
			PBDEs	---	---		
			DBP	---	---		
			BBP	---	---		
			DEHP	---	---		
			DIBP	---	---		
A-58	Silver Metal Gasket	Metal	Pb	P	---	Comply	/
			Cd	P	---		
			Hg	P	---		
			Cr	P	---		
			Br	---	---		
			Cr ⁶⁺	---	---		
			PBBs	---	---		
			PBDEs	---	---		
			DBP	---	---		
			BBP	---	---		
			DEHP	---	---		
			DIBP	---	---		
A-59	Silver Metal Gasket	Metal	Pb	P	---	Comply	/
			Cd	P	---		
			Hg	P	---		
			Cr	P	---		
			Br	---	---		
			Cr ⁶⁺	---	---		
			PBBs	---	---		
			PBDEs	---	---		
			DBP	---	---		
			BBP	---	---		
			DEHP	---	---		
			DIBP	---	---		
A-60	Copper Coil	Metal	Pb	P	---	Comply	/
			Cd	P	---		
			Hg	P	---		
			Cr	P	---		
			Br	---	---		
			Cr ⁶⁺	---	---		
			PBBs	---	---		
			PBDEs	---	---		
			DBP	---	---		
			BBP	---	---		
			DEHP	---	---		
			DIBP	---	---		



Part No.	Description	Material	X-ray Screening		Results of chemical test	Conclusion on RoHS EU	Sample Resubmitted
			Element	Data			
A-61	Tin Solder	Metal	Pb	P	---	Comply	/
			Cd	P	---		
			Hg	P	---		
			Cr	P	---		
			Br	---	---		
			Cr ⁶⁺	---	---		
			PBBs	---	---		
			PBDEs	---	---		
			DBP	---	---		
			BBP	---	---		
			DEHP	---	---		
			DIBP	---	---		
A-62	PCB	Composite	Pb	P	---	Comply	/
			Cd	P	---		
			Hg	P	---		
			Cr	P	---		
			Br	P	---		
			Cr ⁶⁺	---	---		
			PBBs	---	---		
			PBDEs	---	---		
			DBP	---	N.D.		
			BBP	---	N.D.		
			DEHP	---	N.D.		
			DIBP	---	N.D.		
A-63	Black Heat Shrinkable Casing	Polymer	Pb	P	---	Comply	/
			Cd	P	---		
			Hg	P	---		
			Cr	P	---		
			Br	P	---		
			Cr ⁶⁺	---	---		
			PBBs	---	---		
			PBDEs	---	---		
			DBP	---	N.D.		
			BBP	---	N.D.		
			DEHP	---	N.D.		
			DIBP	---	N.D.		
A-64	Black Ceramic	Composite	Pb	P	---	Comply	/
			Cd	P	---		
			Hg	P	---		
			Cr	D	---		
			Br	P	---		
			Cr ⁶⁺	---	N.D.		
			PBBs	---	---		
			PBDEs	---	---		
			DBP	---	N.D.		
			BBP	---	N.D.		
			DEHP	---	N.D.		
			DIBP	---	N.D.		



Part No.	Description	Material	X-ray Screening		Results of chemical test	Conclusion on RoHS EU	Sample Resubmitted
			Element	Data			
A-65	Copper Coil	Metal	Pb	P	---	Comply	/
			Cd	P	---		
			Hg	P	---		
			Cr	P	---		
			Br	---	---		
			Cr ⁶⁺	---	---		
			PBBs	---	---		
			PBDEs	---	---		
			DBP	---	---		
			BBP	---	---		
			DEHP	---	---		
			DIBP	---	---		
A-66	Black Wire Jacket	Polymer	Pb	P	---	Comply	/
			Cd	P	---		
			Hg	P	---		
			Cr	P	---		
			Br	P	---		
			Cr ⁶⁺	---	---		
			PBBs	---	---		
			PBDEs	---	---		
			DBP	---	N.D.		
			BBP	---	N.D.		
			DEHP	---	N.D.		
			DIBP	---	N.D.		
A-67	Silver Aluminum Shell	Metal	Pb	P	---	Comply	/
			Cd	P	---		
			Hg	P	---		
			Cr	P	---		
			Br	---	---		
			Cr ⁶⁺	---	---		
			PBBs	---	---		
			PBDEs	---	---		
			DBP	---	---		
			BBP	---	---		
			DEHP	---	---		
			DIBP	---	---		
A-68	Black Rubber Pad	Polymer	Pb	P	---	Comply	/
			Cd	P	---		
			Hg	P	---		
			Cr	P	---		
			Br	P	---		
			Cr ⁶⁺	---	---		
			PBBs	---	---		
			PBDEs	---	---		
			DBP	---	N.D.		
			BBP	---	N.D.		
			DEHP	---	N.D.		
			DIBP	---	N.D.		



Part No.	Description	Material	X-ray Screening		Results of chemical test	Conclusion on RoHS EU	Sample Resubmitted
			Element	Data			
A-69	Electrolyte	Composite	Pb	P	---	Comply	/
			Cd	P	---		
			Hg	P	---		
			Cr	P	---		
			Br	P	---		
			Cr ⁶⁺	---	---		
			PBBs	---	---		
			PBDEs	---	---		
			DBP	---	N.D.		
			BBP	---	N.D.		
			DEHP	---	N.D.		
DIBP	---	N.D.					
A-70	Silver Metal Electrode	Metal	Pb	P	---	Comply	/
			Cd	P	---		
			Hg	P	---		
			Cr	P	---		
			Br	---	---		
			Cr ⁶⁺	---	---		
			PBBs	---	---		
			PBDEs	---	---		
			DBP	---	---		
			BBP	---	---		
			DEHP	---	---		
DIBP	---	---					
A-71	Yellow Tape	Polymer	Pb	P	---	Comply	/
			Cd	P	---		
			Hg	P	---		
			Cr	P	---		
			Br	P	---		
			Cr ⁶⁺	---	---		
			PBBs	---	---		
			PBDEs	---	---		
			DBP	---	N.D.		
			BBP	---	N.D.		
			DEHP	---	N.D.		
DIBP	---	N.D.					
A-72	Black Plastic	Polymer	Pb	P	---	Comply	/
			Cd	P	---		
			Hg	P	---		
			Cr	P	---		
			Br	P	---		
			Cr ⁶⁺	---	---		
			PBBs	---	---		
			PBDEs	---	---		
			DBP	---	N.D.		
			BBP	---	N.D.		
			DEHP	---	N.D.		
DIBP	---	N.D.					



Part No.	Description	Material	X-ray Screening		Results of chemical test	Conclusion on RoHS EU	Sample Resubmitted
			Element	Data			
A-73	Black Ceramic	Composite	Pb	P	---	Comply	/
			Cd	P	---		
			Hg	P	---		
			Cr	P	---		
			Br	P	---		
			Cr ⁶⁺	---	---		
			PBBs	---	---		
			PBDEs	---	---		
			DBP	---	N.D.		
			BBP	---	N.D.		
			DEHP	---	N.D.		
			DIBP	---	N.D.		
A-74	Copper Coil	Metal	Pb	P	---	Comply	/
			Cd	P	---		
			Hg	P	---		
			Cr	P	---		
			Br	---	---		
			Cr ⁶⁺	---	---		
			PBBs	---	---		
			PBDEs	---	---		
			DBP	---	---		
			BBP	---	---		
			DEHP	---	---		
			DIBP	---	---		
A-75	White Plastic	Polymer	Pb	P	---	Comply	/
			Cd	P	---		
			Hg	P	---		
			Cr	P	---		
			Br	D	---		
			Cr ⁶⁺	---	---		
			PBBs	---	N.D.		
			PBDEs	---	N.D.		
			DBP	---	N.D.		
			BBP	---	N.D.		
			DEHP	---	N.D.		
			DIBP	---	N.D.		
A-76	Silver Metal Plug	Metal	Pb	P	---	Comply	/
			Cd	P	---		
			Hg	P	---		
			Cr	P	---		
			Br	---	---		
			Cr ⁶⁺	---	---		
			PBBs	---	---		
			PBDEs	---	---		
			DBP	---	---		
			BBP	---	---		
			DEHP	---	---		
			DIBP	---	---		



Part No.	Description	Material	X-ray Screening		Results of chemical test	Conclusion on RoHS EU	Sample Resubmitted
			Element	Data			
A-77	Black Plastic	Polymer	Pb	P	---	Comply	/
			Cd	P	---		
			Hg	P	---		
			Cr	P	---		
			Br	P	---		
			Cr ⁶⁺	---	---		
			PBBs	---	---		
			PBDEs	---	---		
			DBP	---	N.D.		
			BBP	---	N.D.		
			DEHP	---	N.D.		
			DIBP	---	N.D.		
A-78	Silvery Metal	Metal	Pb	D	N.D.	Comply	/
			Cd	P	---		
			Hg	P	---		
			Cr	D	---		
			Br	---	---		
			Cr ⁶⁺	---	Negative		
			PBBs	---	---		
			PBDEs	---	---		
			DBP	---	---		
			BBP	---	---		
			DEHP	---	---		
			DIBP	---	---		
A-79	Silvery Metal	Metal	Pb	P	---	Comply	/
			Cd	P	---		
			Hg	P	---		
			Cr	D	---		
			Br	---	---		
			Cr ⁶⁺	---	Negative		
			PBBs	---	---		
			PBDEs	---	---		
			DBP	---	---		
			BBP	---	---		
			DEHP	---	---		
			DIBP	---	---		
A-80	Black Plastic	Polymer	Pb	P	---	Comply	/
			Cd	P	---		
			Hg	P	---		
			Cr	P	---		
			Br	P	---		
			Cr ⁶⁺	---	---		
			PBBs	---	---		
			PBDEs	---	---		
			DBP	---	N.D.		
			BBP	---	N.D.		
			DEHP	---	N.D.		
			DIBP	---	N.D.		



Part No.	Description	Material	X-ray Screening		Results of chemical test	Conclusion on RoHS EU	Sample Resubmitted
			Element	Data			
A-81	Silver Metal Pins	Metal	Pb	P	---	Comply	/
			Cd	P			
			Hg	P			
			Cr	P			
			Br	---			
			Cr ⁶⁺	---			
			PBBs	---			
			PBDEs	---			
			DBP	---			
			BBP	---			
			DEHP	---			
			DIBP	---			
A-82	Metal Spring	Metal	Pb	P	Negative	Comply	/
			Cd	P			
			Hg	P			
			Cr	D			
			Br	---			
			Cr ⁶⁺	---			
			PBBs	---			
			PBDEs	---			
			DBP	---			
			BBP	---			
			DEHP	---			
			DIBP	---			
A-83	Metal Bar	Metal	Pb	P	Negative	Comply	/
			Cd	P			
			Hg	P			
			Cr	D			
			Br	---			
			Cr ⁶⁺	---			
			PBBs	---			
			PBDEs	---			
			DBP	---			
			BBP	---			
			DEHP	---			
			DIBP	---			
A-84	Button Battery	Metal	Pb	P	Negative	Comply	/
			Cd	P			
			Hg	P			
			Cr	D			
			Br	---			
			Cr ⁶⁺	---			
			PBBs	---			
			PBDEs	---			
			DBP	---			
			BBP	---			
			DEHP	---			
			DIBP	---			



Part No.	Description	Material	X-ray Screening		Results of chemical test	Conclusion on RoHS EU	Sample Resubmitted
			Element	Data			
A-85	IC	Composite	Pb	P	---	Comply	/
			Cd	P	---		
			Hg	P	---		
			Cr	P	---		
			Br	P	---		
			Cr ⁶⁺	---	---		
			PBBs	---	---		
			PBDEs	---	---		
			DBP	---	N.D.		
			BBP	---	N.D.		
			DEHP	---	N.D.		
DIBP	---	N.D.					
A-86	IC	Composite	Pb	P	---	Comply	/
			Cd	P	---		
			Hg	P	---		
			Cr	P	---		
			Br	P	---		
			Cr ⁶⁺	---	---		
			PBBs	---	---		
			PBDEs	---	---		
			DBP	---	N.D.		
			BBP	---	N.D.		
			DEHP	---	N.D.		
DIBP	---	N.D.					
A-87	IC	Composite	Pb	P	---	Comply	/
			Cd	P	---		
			Hg	P	---		
			Cr	P	---		
			Br	P	---		
			Cr ⁶⁺	---	---		
			PBBs	---	---		
			PBDEs	---	---		
			DBP	---	N.D.		
			BBP	---	N.D.		
			DEHP	---	N.D.		
DIBP	---	N.D.					
A-88	IC	Composite	Pb	P	---	Comply	/
			Cd	P	---		
			Hg	P	---		
			Cr	P	---		
			Br	P	---		
			Cr ⁶⁺	---	---		
			PBBs	---	---		
			PBDEs	---	---		
			DBP	---	N.D.		
			BBP	---	N.D.		
			DEHP	---	N.D.		
DIBP	---	N.D.					



Part No.	Description	Material	X-ray Screening		Results of chemical test	Conclusion on RoHS EU	Sample Resubmitted
			Element	Data			
A-89	IC	Composite	Pb	P	---	Comply	/
			Cd	P	---		
			Hg	P	---		
			Cr	P	---		
			Br	P	---		
			Cr ⁶⁺	---	---		
			PBBs	---	---		
			PBDEs	---	---		
			DBP	---	N.D.		
			BBP	---	N.D.		
			DEHP	---	N.D.		
			DIBP	---	N.D.		
A-90	IC	Composite	Pb	P	---	Comply	/
			Cd	P	---		
			Hg	P	---		
			Cr	P	---		
			Br	P	---		
			Cr ⁶⁺	---	---		
			PBBs	---	---		
			PBDEs	---	---		
			DBP	---	N.D.		
			BBP	---	N.D.		
			DEHP	---	N.D.		
			DIBP	---	N.D.		
A-91	IC	Composite	Pb	P	---	Comply	/
			Cd	P	---		
			Hg	P	---		
			Cr	P	---		
			Br	P	---		
			Cr ⁶⁺	---	---		
			PBBs	---	---		
			PBDEs	---	---		
			DBP	---	N.D.		
			BBP	---	N.D.		
			DEHP	---	N.D.		
			DIBP	---	N.D.		
A-92	IC	Composite	Pb	P	---	Comply	/
			Cd	P	---		
			Hg	P	---		
			Cr	P	---		
			Br	P	---		
			Cr ⁶⁺	---	---		
			PBBs	---	---		
			PBDEs	---	---		
			DBP	---	N.D.		
			BBP	---	N.D.		
			DEHP	---	N.D.		
			DIBP	---	N.D.		



Part No.	Description	Material	X-ray Screening		Results of chemical test	Conclusion on RoHS EU	Sample Resubmitted
			Element	Data			
A-93	IC	Composite	Pb	P	---	Comply	/
			Cd	P	---		
			Hg	P	---		
			Cr	P	---		
			Br	P	---		
			Cr ⁶⁺	---	---		
			PBBs	---	---		
			PBDEs	---	---		
			DBP	---	N.D.		
			BBP	---	N.D.		
			DEHP	---	N.D.		
			DIBP	---	N.D.		
A-94	IC	Composite	Pb	P	---	Comply	/
			Cd	P	---		
			Hg	P	---		
			Cr	P	---		
			Br	P	---		
			Cr ⁶⁺	---	---		
			PBBs	---	---		
			PBDEs	---	---		
			DBP	---	N.D.		
			BBP	---	N.D.		
			DEHP	---	N.D.		
			DIBP	---	N.D.		
A-95	IC	Composite	Pb	D	N.D.	Comply	/
			Cd	P	---		
			Hg	P	---		
			Cr	D	---		
			Br	P	---		
			Cr ⁶⁺	---	N.D.		
			PBBs	---	---		
			PBDEs	---	---		
			DBP	---	N.D.		
			BBP	---	N.D.		
			DEHP	---	N.D.		
			DIBP	---	N.D.		
A-96	IC	Composite	Pb	P	---	Comply	/
			Cd	P	---		
			Hg	P	---		
			Cr	P	---		
			Br	P	---		
			Cr ⁶⁺	---	---		
			PBBs	---	---		
			PBDEs	---	---		
			DBP	---	N.D.		
			BBP	---	N.D.		
			DEHP	---	N.D.		
			DIBP	---	N.D.		



Part No.	Description	Material	X-ray Screening		Results of chemical test	Conclusion on RoHS EU	Sample Resubmitted
			Element	Data			
A-97	IC	Composite	Pb	P	---	Comply	/
			Cd	P	---		
			Hg	P	---		
			Cr	P	---		
			Br	P	---		
			Cr ⁶⁺	---	---		
			PBBs	---	---		
			PBDEs	---	---		
			DBP	---	N.D.		
			BBP	---	N.D.		
			DEHP	---	N.D.		
			DIBP	---	N.D.		
A-98	IC	Composite	Pb	P	---	Comply	/
			Cd	P	---		
			Hg	P	---		
			Cr	P	---		
			Br	P	---		
			Cr ⁶⁺	---	---		
			PBBs	---	---		
			PBDEs	---	---		
			DBP	---	N.D.		
			BBP	---	N.D.		
			DEHP	---	N.D.		
			DIBP	---	N.D.		
A-99	IC	Composite	Pb	P	---	Comply	/
			Cd	P	---		
			Hg	P	---		
			Cr	P	---		
			Br	P	---		
			Cr ⁶⁺	---	---		
			PBBs	---	---		
			PBDEs	---	---		
			DBP	---	N.D.		
			BBP	---	N.D.		
			DEHP	---	N.D.		
			DIBP	---	N.D.		
A-100	IC	Composite	Pb	P	---	Comply	/
			Cd	P	---		
			Hg	P	---		
			Cr	P	---		
			Br	P	---		
			Cr ⁶⁺	---	---		
			PBBs	---	---		
			PBDEs	---	---		
			DBP	---	N.D.		
			BBP	---	N.D.		
			DEHP	---	N.D.		
			DIBP	---	N.D.		



Part No.	Description	Material	X-ray Screening		Results of chemical test	Conclusion on RoHS EU	Sample Resubmitted
			Element	Data			
A-101	IC	Composite	Pb	P	---	Comply	/
			Cd	P	---		
			Hg	P	---		
			Cr	P	---		
			Br	P	---		
			Cr ⁶⁺	---	---		
			PBBs	---	---		
			PBDEs	---	---		
			DBP	---	N.D.		
			BBP	---	N.D.		
			DEHP	---	N.D.		
DIBP	---	N.D.					
A-102	IC	Composite	Pb	P	---	Comply	/
			Cd	P	---		
			Hg	P	---		
			Cr	P	---		
			Br	P	---		
			Cr ⁶⁺	---	---		
			PBBs	---	---		
			PBDEs	---	---		
			DBP	---	N.D.		
			BBP	---	N.D.		
			DEHP	---	N.D.		
DIBP	---	N.D.					
A-103	IC	Composite	Pb	P	---	Comply	/
			Cd	P	---		
			Hg	P	---		
			Cr	P	---		
			Br	P	---		
			Cr ⁶⁺	---	---		
			PBBs	---	---		
			PBDEs	---	---		
			DBP	---	N.D.		
			BBP	---	N.D.		
			DEHP	---	N.D.		
DIBP	---	N.D.					
A-104	IC	Composite	Pb	P	---	Comply	/
			Cd	P	---		
			Hg	P	---		
			Cr	P	---		
			Br	P	---		
			Cr ⁶⁺	---	---		
			PBBs	---	---		
			PBDEs	---	---		
			DBP	---	N.D.		
			BBP	---	N.D.		
			DEHP	---	N.D.		
DIBP	---	N.D.					



Part No.	Description	Material	X-ray Screening		Results of chemical test	Conclusion on RoHS EU	Sample Resubmitted
			Element	Data			
A-105	Yellow Ceramic	Composite	Pb	P	---	Comply	/
			Cd	P	---		
			Hg	P	---		
			Cr	P	---		
			Br	P	---		
			Cr ⁶⁺	---	---		
			PBBs	---	---		
			PBDEs	---	---		
			DBP	---	N.D.		
			BBP	---	N.D.		
			DEHP	---	N.D.		
DIBP	---	N.D.					
A-106	Inductance	Composite	Pb	P	---	Comply	/
			Cd	P	---		
			Hg	P	---		
			Cr	D	---		
			Br	P	---		
			Cr ⁶⁺	---	N.D.		
			PBBs	---	---		
			PBDEs	---	---		
			DBP	---	N.D.		
			BBP	---	N.D.		
			DEHP	---	N.D.		
DIBP	---	N.D.					
A-107	Crystal Oscillator	Composite	Pb	P	---	Comply	/
			Cd	P	---		
			Hg	P	---		
			Cr	P	---		
			Br	P	---		
			Cr ⁶⁺	---	---		
			PBBs	---	---		
			PBDEs	---	---		
			DBP	---	N.D.		
			BBP	---	N.D.		
			DEHP	---	N.D.		
DIBP	---	N.D.					
A-108	Triode	Composite	Pb	P	---	Comply	/
			Cd	P	---		
			Hg	P	---		
			Cr	P	---		
			Br	P	---		
			Cr ⁶⁺	---	---		
			PBBs	---	---		
			PBDEs	---	---		
			DBP	---	N.D.		
			BBP	---	N.D.		
			DEHP	---	N.D.		
DIBP	---	N.D.					



Part No.	Description	Material	X-ray Screening		Results of chemical test	Conclusion on RoHS EU	Sample Resubmitted
			Element	Data			
A-109	Diode	Composite	Pb	P	---	Comply	/
			Cd	P	---		
			Hg	P	---		
			Cr	P	---		
			Br	P	---		
			Cr ⁶⁺	---	---		
			PBBs	---	---		
			PBDEs	---	---		
			DBP	---	N.D.		
			BBP	---	N.D.		
			DEHP	---	N.D.		
			DIBP	---	N.D.		
A-110	Capacitor	Composite	Pb	P	---	Comply	/
			Cd	P	---		
			Hg	P	---		
			Cr	P	---		
			Br	P	---		
			Cr ⁶⁺	---	---		
			PBBs	---	---		
			PBDEs	---	---		
			DBP	---	N.D.		
			BBP	---	N.D.		
			DEHP	---	N.D.		
			DIBP	---	N.D.		
A-111	Capacitor	Composite	Pb	P	---	Comply	/
			Cd	P	---		
			Hg	P	---		
			Cr	P	---		
			Br	P	---		
			Cr ⁶⁺	---	---		
			PBBs	---	---		
			PBDEs	---	---		
			DBP	---	N.D.		
			BBP	---	N.D.		
			DEHP	---	N.D.		
			DIBP	---	N.D.		
A-112	Resistance	Composite	Pb	P	---	Comply	/
			Cd	P	---		
			Hg	P	---		
			Cr	D	---		
			Br	P	---		
			Cr ⁶⁺	---	N.D.		
			PBBs	---	---		
			PBDEs	---	---		
			DBP	---	N.D.		
			BBP	---	N.D.		
			DEHP	---	N.D.		
			DIBP	---	N.D.		



Part No.	Description	Material	X-ray Screening		Results of chemical test	Conclusion on RoHS EU	Sample Resubmitted
			Element	Data			
A-113	Chip Inductor	Composite	Pb	P	---	Comply	/
			Cd	P	---		
			Hg	P	---		
			Cr	P	---		
			Br	P	---		
			Cr ⁶⁺	---	---		
			PBBs	---	---		
			PBDEs	---	---		
			DBP	---	N.D.		
			BBP	---	N.D.		
			DEHP	---	N.D.		
DIBP	---	N.D.					
A-114	Chip Capacitor	Composite	Pb	P	---	Comply	/
			Cd	P	---		
			Hg	P	---		
			Cr	D	---		
			Br	P	---		
			Cr ⁶⁺	---	N.D.		
			PBBs	---	---		
			PBDEs	---	---		
			DBP	---	N.D.		
			BBP	---	N.D.		
			DEHP	---	N.D.		
DIBP	---	N.D.					
A-115	PCB	Composite	Pb	P	---	Comply	/
			Cd	P	---		
			Hg	P	---		
			Cr	P	---		
			Br	D	---		
			Cr ⁶⁺	---	---		
			PBBs	---	N.D.		
			PBDEs	---	N.D.		
			DBP	---	N.D.		
			BBP	---	N.D.		
			DEHP	---	N.D.		
DIBP	---	N.D.					
A-116	IC	Composite	Pb	P	---	Comply	/
			Cd	P	---		
			Hg	P	---		
			Cr	P	---		
			Br	P	---		
			Cr ⁶⁺	---	---		
			PBBs	---	---		
			PBDEs	---	---		
			DBP	---	N.D.		
			BBP	---	N.D.		
			DEHP	---	N.D.		
DIBP	---	N.D.					



Part No.	Description	Material	X-ray Screening		Results of chemical test	Conclusion on RoHS EU	Sample Resubmitted
			Element	Data			
A-117	IC	Composite	Pb	P	---	Comply	/
			Cd	P	---		
			Hg	P	---		
			Cr	P	---		
			Br	P	---		
			Cr ⁶⁺	---	---		
			PBBs	---	---		
			PBDEs	---	---		
			DBP	---	N.D.		
			BBP	---	N.D.		
			DEHP	---	N.D.		
			DIBP	---	N.D.		
A-118	IC	Composite	Pb	P	---	Comply	/
			Cd	P	---		
			Hg	P	---		
			Cr	P	---		
			Br	P	---		
			Cr ⁶⁺	---	---		
			PBBs	---	---		
			PBDEs	---	---		
			DBP	---	N.D.		
			BBP	---	N.D.		
			DEHP	---	N.D.		
			DIBP	---	N.D.		
A-119	IC	Composite	Pb	P	---	Comply	/
			Cd	P	---		
			Hg	P	---		
			Cr	P	---		
			Br	P	---		
			Cr ⁶⁺	---	---		
			PBBs	---	---		
			PBDEs	---	---		
			DBP	---	N.D.		
			BBP	---	N.D.		
			DEHP	---	N.D.		
			DIBP	---	N.D.		
A-120	IC	Composite	Pb	P	---	Comply	/
			Cd	P	---		
			Hg	P	---		
			Cr	P	---		
			Br	P	---		
			Cr ⁶⁺	---	---		
			PBBs	---	---		
			PBDEs	---	---		
			DBP	---	N.D.		
			BBP	---	N.D.		
			DEHP	---	N.D.		
			DIBP	---	N.D.		



Part No.	Description	Material	X-ray Screening		Results of chemical test	Conclusion on RoHS EU	Sample Resubmitted
			Element	Data			
A-121	IC	Composite	Pb	P	---	Comply	/
			Cd	P	---		
			Hg	P	---		
			Cr	D	---		
			Br	P	---		
			Cr ⁶⁺	---	N.D.		
			PBBs	---	---		
			PBDEs	---	---		
			DBP	---	N.D.		
			BBP	---	N.D.		
			DEHP	---	N.D.		
DIBP	---	N.D.					
A-122	Inductance	Composite	Pb	P	---	Comply	/
			Cd	P	---		
			Hg	P	---		
			Cr	D	---		
			Br	P	---		
			Cr ⁶⁺	---	N.D.		
			PBBs	---	---		
			PBDEs	---	---		
			DBP	---	N.D.		
			BBP	---	N.D.		
			DEHP	---	N.D.		
DIBP	---	N.D.					
A-123	Capacitor	Composite	Pb	P	---	Comply	/
			Cd	P	---		
			Hg	P	---		
			Cr	P	---		
			Br	P	---		
			Cr ⁶⁺	---	---		
			PBBs	---	---		
			PBDEs	---	---		
			DBP	---	N.D.		
			BBP	---	N.D.		
			DEHP	---	N.D.		
DIBP	---	N.D.					
A-124	Label	Polymer	Pb	P	---	Comply	/
			Cd	P	---		
			Hg	P	---		
			Cr	P	---		
			Br	P	---		
			Cr ⁶⁺	---	---		
			PBBs	---	---		
			PBDEs	---	---		
			DBP	---	N.D.		
			BBP	---	N.D.		
			DEHP	---	N.D.		
DIBP	---	N.D.					



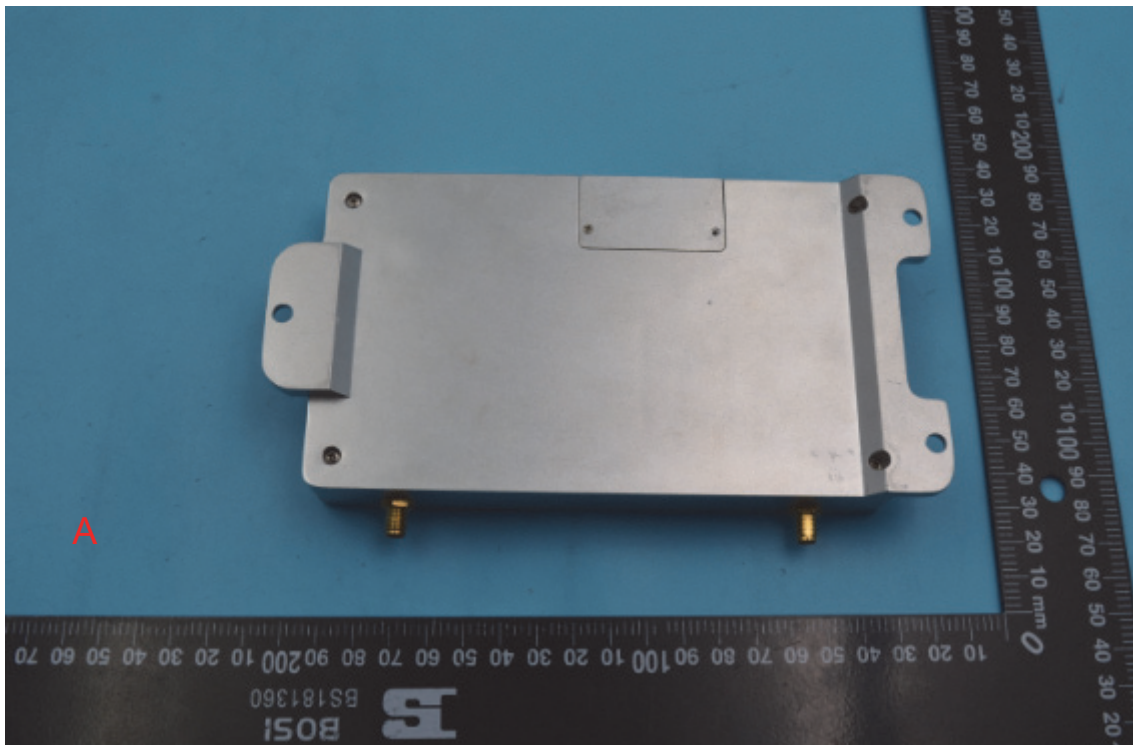
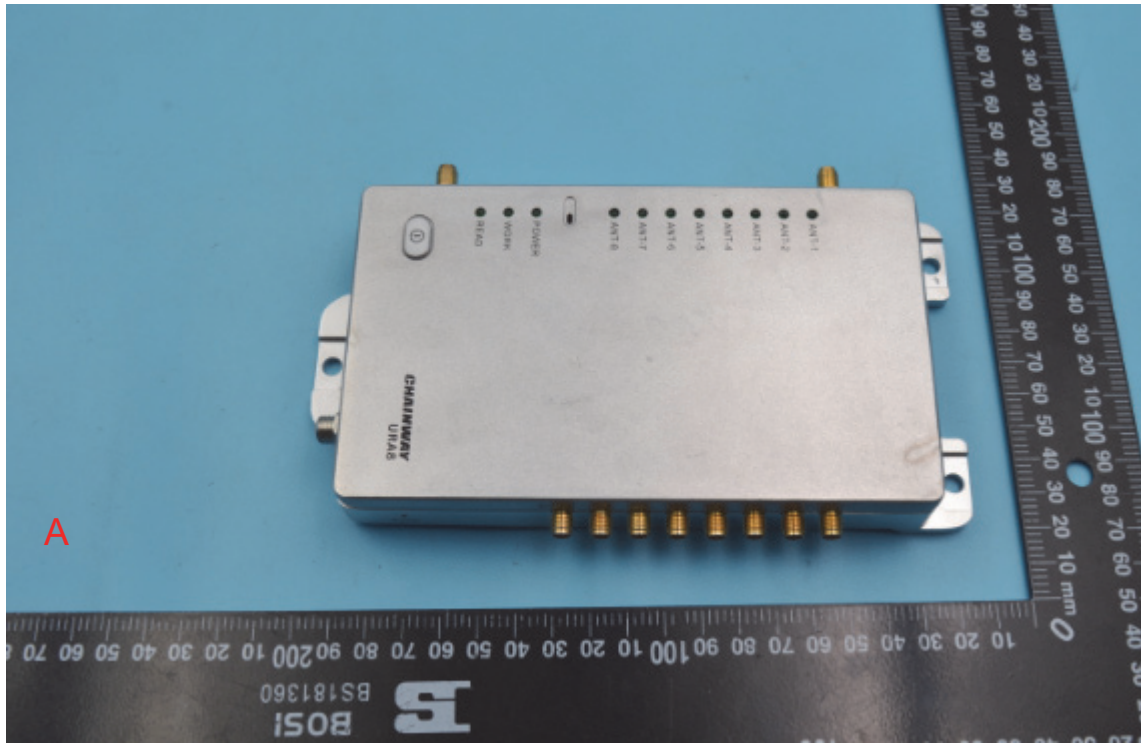
Part No.	Description	Material	X-ray Screening		Results of chemical test	Conclusion on RoHS EU	Sample Resubmitted	
			Element	Data				
A-125	Silver Metal Shielding Case	Metal	Pb	P	---	Negative	Comply	/
			Cd	P	---			
			Hg	P	---			
			Cr	D	---			
			Br	---	---			
			Cr ⁶⁺	---	---			
			PBBs	---	---			
			PBDEs	---	---			
			DBP	---	---			
			BBP	---	---			
			DEHP	---	---			
			DIBP	---	---			
A-126	Tin Solder	Metal	Pb	P	---	Comply	/	
			Cd	P	---			
			Hg	P	---			
			Cr	P	---			
			Br	---	---			
			Cr ⁶⁺	---	---			
			PBBs	---	---			
			PBDEs	---	---			
			DBP	---	---			
			BBP	---	---			
			DEHP	---	---			
			DIBP	---	---			
A-127	PCB	Composite	Pb	P	---	N.D.	Comply	/
			Cd	P	---			
			Hg	P	---			
			Cr	P	---			
			Br	D	---			
			Cr ⁶⁺	---	---			
			PBBs	---	---			
			PBDEs	---	---			
			DBP	---	---			
			BBP	---	---			
			DEHP	---	---			
			DIBP	---	---			

Remark:

(1) mg/kg=ppm

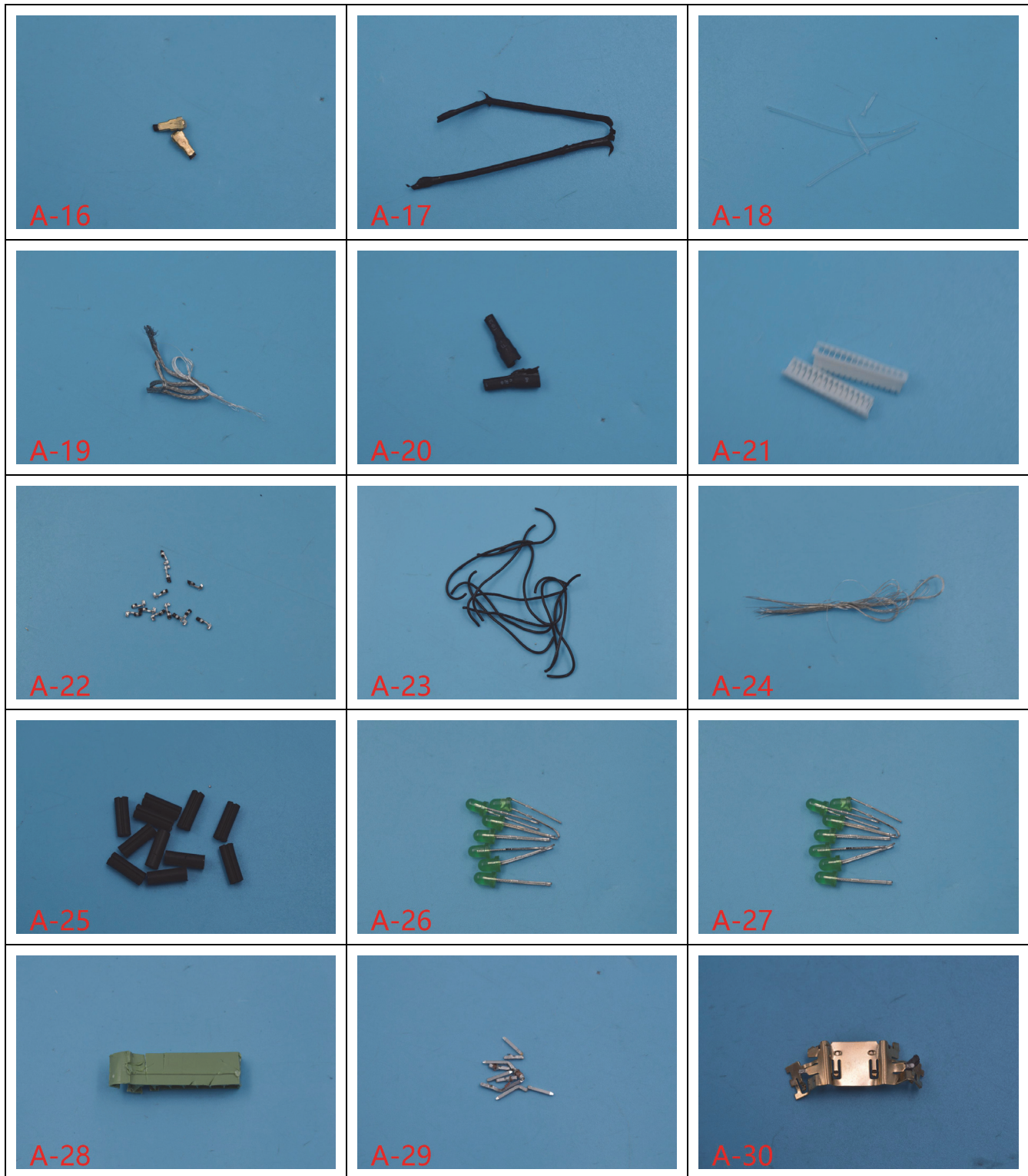
(2) # = Lead in copper alloy containing up to 4% lead by weight. The item is exempted from the requirements of the item 6(c) in ANNEX III, (Directive 2011/65/EU).

Annex A Photographs of the EUT

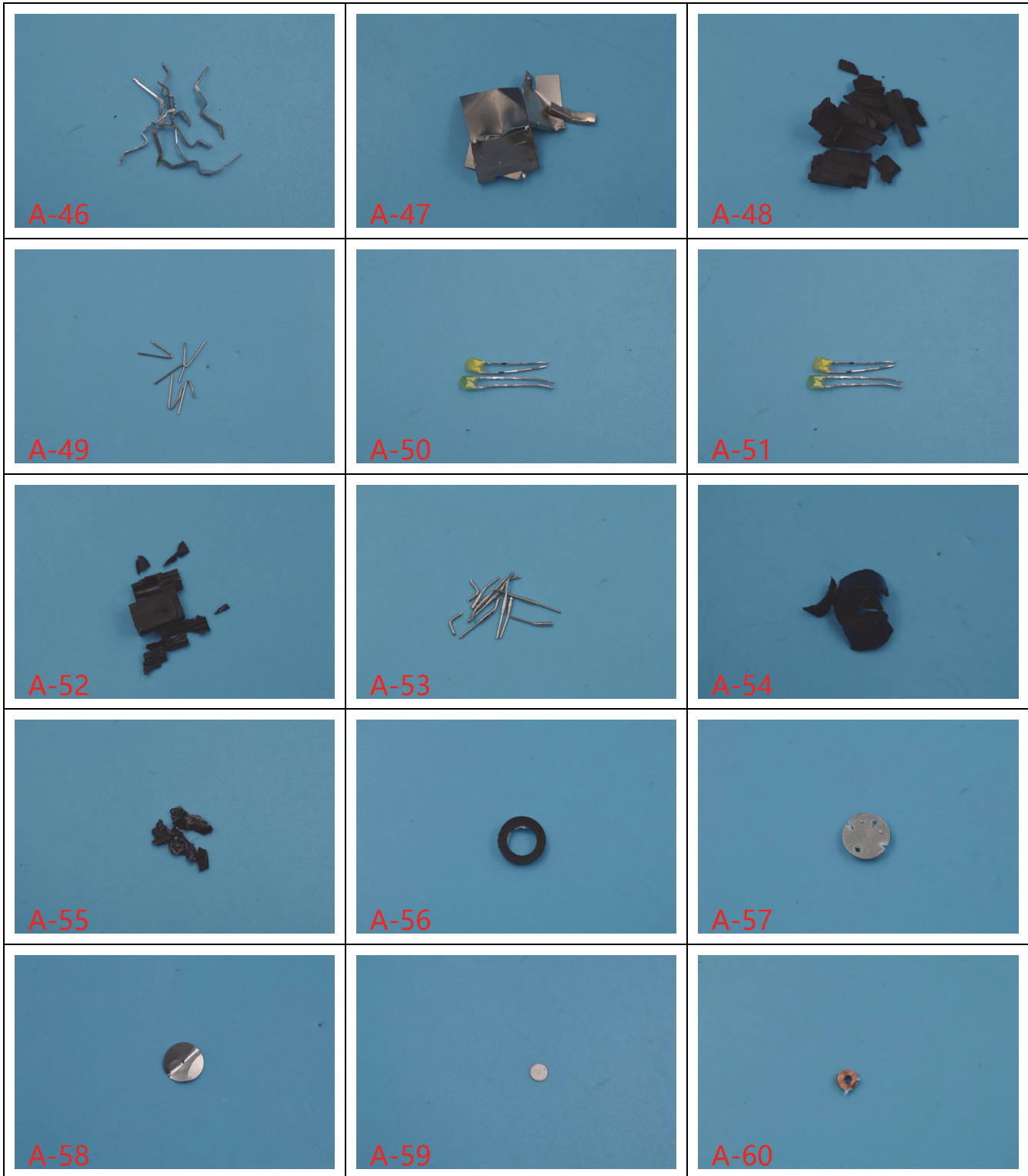


Annex B Photographs of Test Part

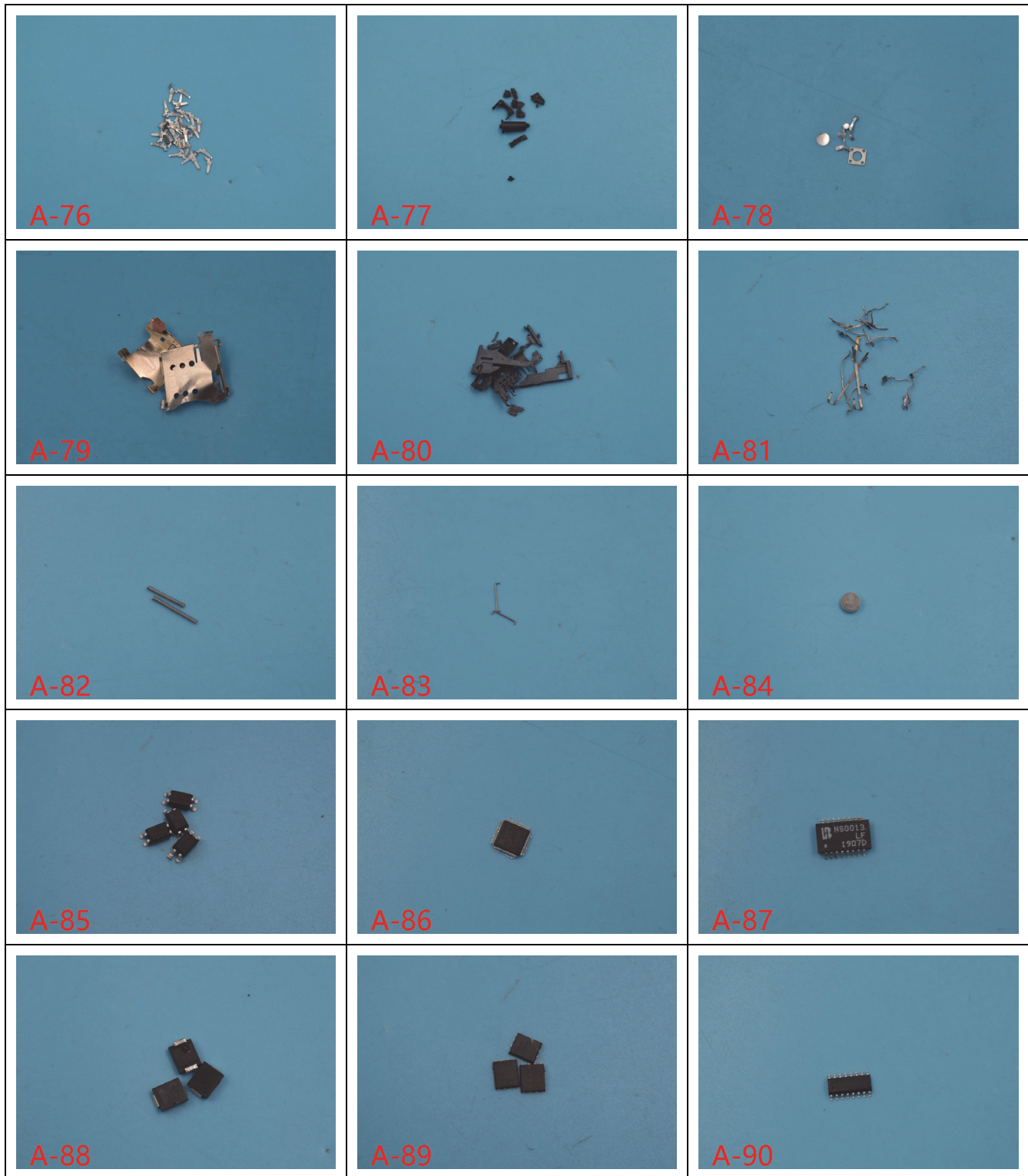




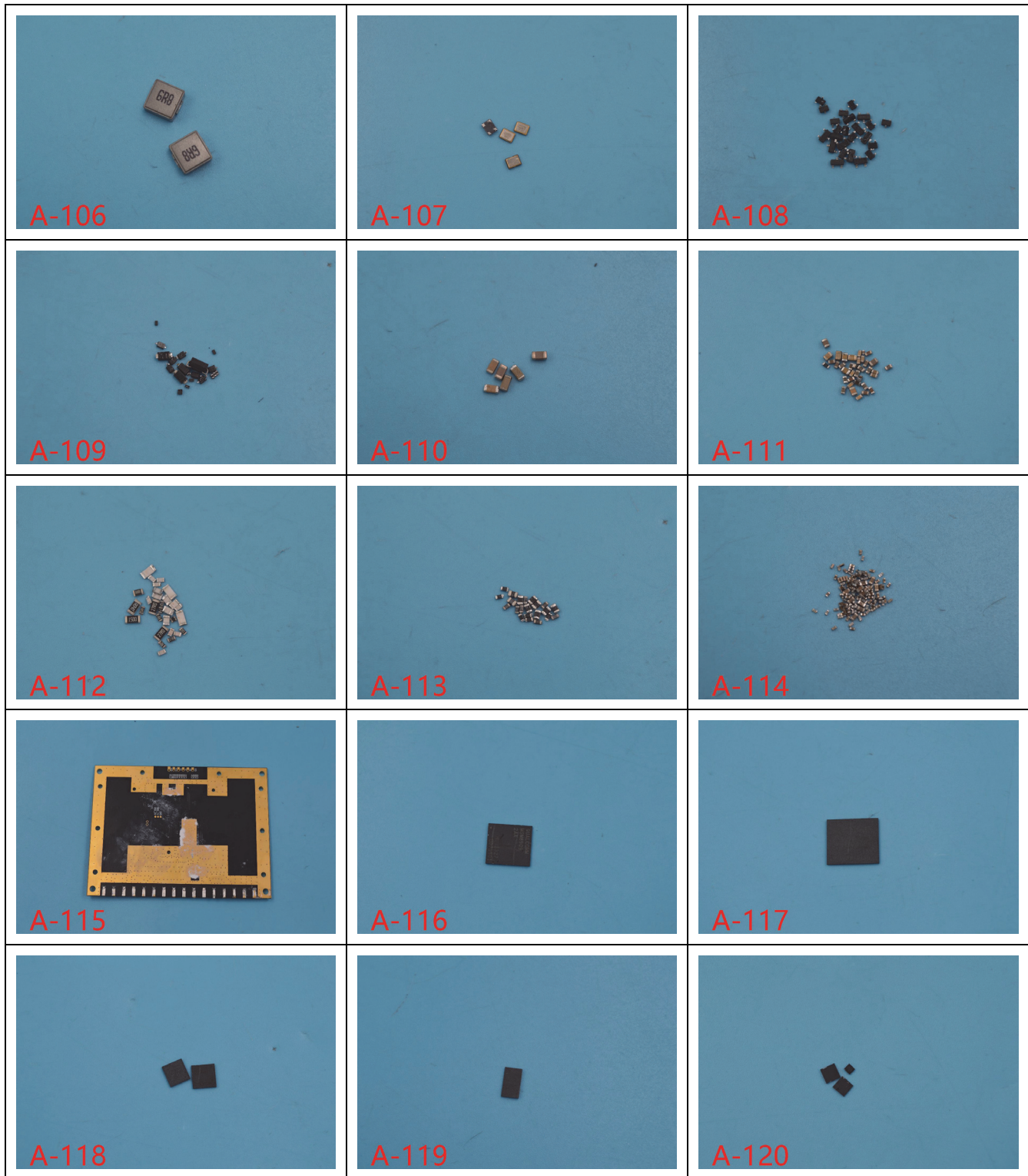


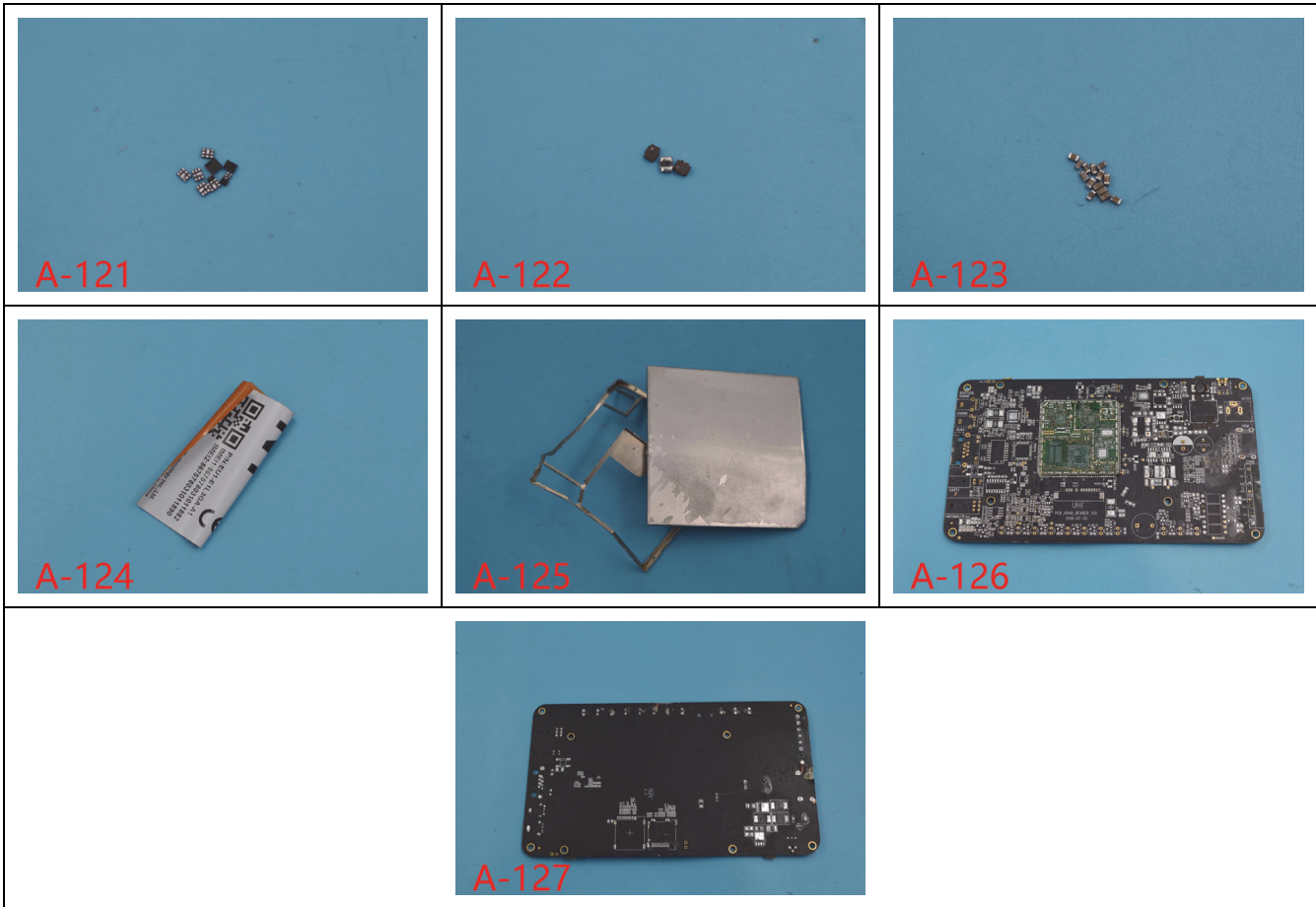












Annex C General Information

1.1 Identification of the Responsible Testing Laboratory

Laboratory Name:	Shenzhen Morlab Communications Technology Co.,Ltd. Morlab Laboratory
Laboratory Address:	FL1-3, Building A, FeiYang Science Park, No.8 LongChang Road, Block67, BaoAn District, ShenZhen , GuangDong Province, P. R. China
Accredited Testing Laboratory:	CNAS No. L3572 (Shenzhen Morlab Communications Technology Co., Ltd.)

1.2 Identification of the Responsible Testing Location

Name:	Shenzhen Morlab Communications Technology Co., Ltd. Morlab Laboratory
Address:	FL1-3, Building A, FeiYang Science Park, No.8 LongChang Road, Block67, BaoAn District, ShenZhen , GuangDong Province, P. R. China

1.3 Test Equipment Utilized

No.	Equipment Name	Serial No.	Type	Manufacturer	Cal.Date	Cal.Due Date
1	X-Ray Fluorescence Spectroscopy(XRF)	100180017-00 406A	EDX-1800B	Skyray	2019.04.10	2020.04.09
2	X-Ray Fluorescence Spectroscopy(XRF)	100180017-01 151A	EDX-1800B	Skyray	2019.08.09	2020.08.08
3	Gas Chromatography-Mass Spectrometer (GC-MS)	CN10617090	6890-5975I	Agilent	2019.04.10	2020.04.09
4	Visible Spectrophotometer	723S18011	DP-733S	Delp	2019.07.29	2020.07.28
5	IPC-OES	842320072001	ICAP7200	Thermo	2019.04.10	2020.04.09

***** END OF REPORT *****